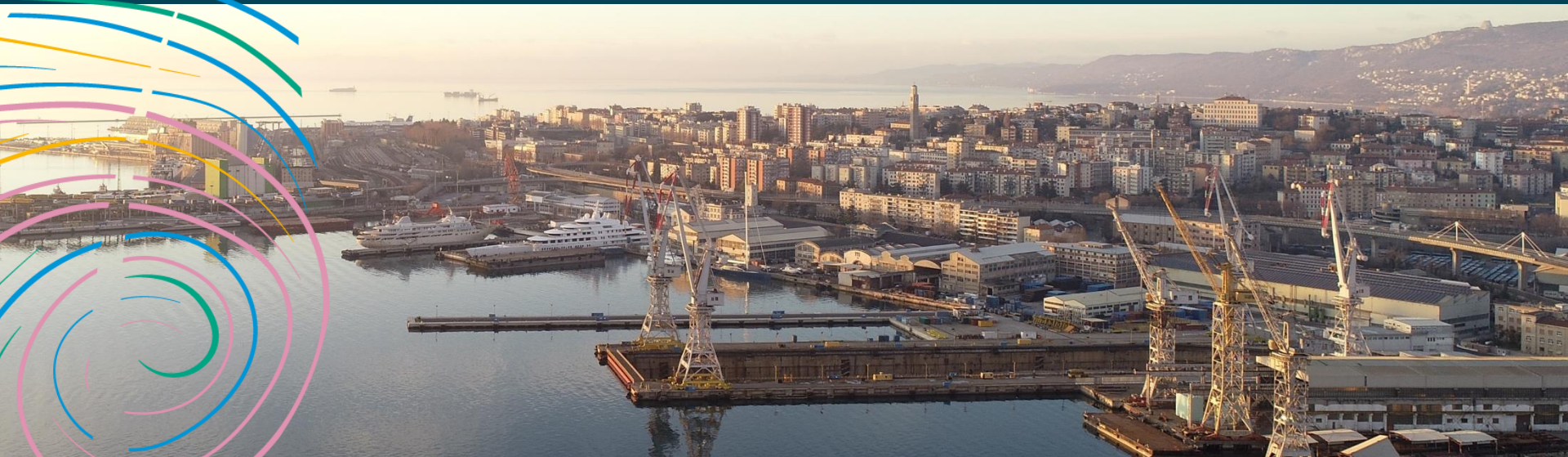


# TREASURE

Testing novel environmental  
quality measures in and  
around Euro-MED ports



**TREASURE Webinar – Approach to Environmental Governance – 26<sup>th</sup> February 2026**



**TREASURE**

**Interreg**  
Euro-MED



Co-funded by  
the European Union



# Governance Model for Environmental Improvement in Ports

Collaborative approaches and  
decision-making frameworks

TREASURE Webinar – Approach to Environmental Governance – 26th February 2026



**TREASURE**

**Interreg**  
Euro-MED



Co-funded by  
the European Union



**TREASURES's overall objective** is to **improve environmental quality in** and around Mediterranean **port areas**, by mitigating and reducing sediment and water pollution

€  
**2 M**  
**EU FUNDING**



Jan 2024  
-----  
**Jun 2026**  
**+3m**

## Project overall objective

**TEST and  
CAPITALISATION  
project**



**TREASURE** is implemented in the framework of the **Euro-MED programme** and co-financed by the EU.



**TREASURE**

**Interreg  
Euro-MED**



Co-funded by  
the European Union





# TREASURE Partnership

## Partners:

1. **Agency for the development of the Empolese Valdelsa (IT) – Lead partner**
2. Italian Institute for Environmental Protection and Research (IT)
3. Port of Bar (ME)
4. Valenciaport Foundation for research (ES)
5. Durres Port Authority (AL)
6. Toulon Var Technologie (FR)
7. Transport Malta (MT)
8. Pireus Port Authority (EL)
9. Central European Initiative (IT)

## Associated partners:

- Regione Toscana
- ARPA Toscana
- Université de Sfax
- Conférence des régions Périphériques maritimes d'Europe (CRPM)
- Autoridad Portuaria de Valencia
- Instituti i Transportit

TREASURE gathers 9 Partners representing 7 MED port areas and regions + 6 Associated Partners

**9+6**  
Partners



**TREASURE**

**Interreg**  
Euro-MED



Co-funded by  
the European Union



# Project challenges

C1

## GOVERNANCE [→ WP1]

Multi-stakeholder, cross-sector **governance solutions**, designed for the creation and management of territorial labs (mini-labs), as well as to introduce improvements to policies and regulations

C2

## MONITORING ENVIRONMENTAL QUALITY [→ WP2]

New approaches to environmental assessment, through “**Lines of Evidence**”, for a qualitative evaluation of different compartments (sediments / water / biota) of the port environment

C3

## INNOVATIVE TECHNOLOGIES [→ WP3]

Identification and Testing of novel **techniques for environmental remediation** in sediments and water, in and around port areas



TREASURE

Interreg  
Euro-MED



Co-funded by  
the European Union





# WP1 in a nutshell

## CHALLENGE 1 - GOVERNANCE

### ACTION 1 - Multi-stakeholder Supporting Ecosystem for the creation and management of Territorial Labs

A1.1

**Knowledge transfer** and Capture on Multi- Stakeholder support ecosystems from previous practices

A1.2

Creating the **multi-stakeholder ecosystem** and agreements

A1.3

Testing **mini-territorial Labs** across Euro-MED territories



WP2

WP3



TREASURE

Interreg  
Euro-MED



Co-funded by  
the European Union





# Stakeholder ecosystem analysis

At the very beginning, we shared a **template to map local actors** and pave the ground to the following agreement (**2 steps**)

## **STEP 1 – Context analysis:**

**Introduction to the port area**, description of the port area analysed, highlighting all key features of interest for TREASURE activities.

**Environmental challenges**, with indication of the relevance.

**Key stakeholders**, indicating role and responsibilities in the area

**Existing agreements**, if any, to be capitalized in TREASURE

**All partners  
provided a first  
release of Step1  
at Kick-Off**

## **STEP 2 – Key elements for the local agreement:**

**Objectives**, general and specific ones for the agreement to be signed

**Signatories**, with indication of roles and responsibilities within the agreement

**Setting up of the TREASURE mini-lab:** How do you imagine your **TREASURE mini-lab?**

**Preliminary outline**



TREASURE

Interreg  
Euro-MED



Co-funded by  
the European Union



# Levels of involvement of STAKEHOLDERS

## 0. STAKEHOLDER GROUP

Information and communication

Project involvement

Business interest

Final users

## 1. MINI-LAB (Concept)

Activity implementation

Facilities and Equipment

## 2. AGREEMENT

Role and responsibility

Technical Skills



TREASURE

Interreg  
Euro-MED



Co-funded by  
the European Union



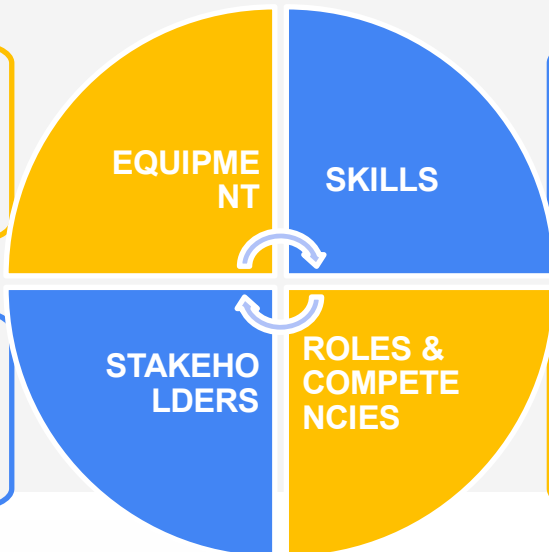
## WHAT do we mean by mini-lab?

The **mini-lab** is a **CONCEPT** that identifies both the **working environment** and **site** (or the sum of sites in the case of a distributed laboratory) **where the technical-scientific activity is implemented** in each port area, **and the working group**.

More extensively, **the mini-lab** is the concept that **includes the key issues of the local ecosystem**:

- **Existing** facilities and laboratories
- **New** TREASURE equipment
- Widespread collaboration **network**

- **Signatories** of the local TREASURE agreement
- **Other** key stakeholders (universities, institutions, industries)



- Technical-scientific skills** for local testing activities in:
- **Monitoring** water quality (**WP2**)
  - **Testing** new solution for water/air (**WP3**)

- **Port area management**
- **Environmental** prevention and monitoring
- **Health** and safety
- **Policy-making** and financing



TREASURE

Interreg  
Euro-MED



Co-funded by  
the European Union



## Agreement Template: key issues

### Legal form of the agreement

- ▶ **Different forms accepted**, including renewal or updating of existing ones

### Objectives

- ▶ **Consistent** with the TREASURE objectives and mini-lab testing activities (!). **Wider** if you wish

### Signatories

- ▶ Only the **main ones for the governance** of activities (**NOT** all SG). **At least one** in addition to the partner(s)

### Contents

- ▶ **Consistent** with the TREASURE objectives (!). More or less **detail as preferred**

### Duration

- ▶ At least **as long as TREASURE time period**. **Longer** if you wish



TREASURE

Interreg  
Euro-MED



Co-funded by  
the European Union





## Example : Durres port area

→ New agreement signed in order to:

- **Establishing a multi stakeholders supporting ecosystem** for the creation and management of territorial labs to improve environmental quality in port areas.
- Promote a joint **collaboration and data/experience exchange** in order to analyze, elaborate and **identify solutions** that are facing the **environmental challenges** in port.
- **Set up of** territorial labs (**mini labs**) for experimental **testing of innovative techniques** to remediate contaminated soils and water in the port areas



→ Stakeholders involved:

Organization	Role and tasks
<b>Durres Port Authority</b>	Port management authority responsible for ensuring navigability and maintaining and deepening the seabed
<b>Regional Environmental Agency Tirana-Durres-Diber</b>	Regional agency for environmental protection → skills, checking observance of the rules and legislations



TREASURE

Interreg  
Euro-MED



Co-funded by  
the European Union





# Project deliverables for the challenge GOVERNANCE

**CHALLENGE 1 GOVERNANCE** will result in 2 key **project deliverables** which will be available to the **Euro-MED Academy**:

## D1.3.1 Report on testing the multi-stakeholder supporting ecosystem

WP1

The report provides a **summary of the implemented local mini-lab** prototype and **multi-stakeholder ecosystem** in each of the **7 port areas**, including an overview of **context analysis, stakeholders** involved and signed **agreements**.

## D4.3.1 TREASURE Action Plans for territorial mainstreaming

WP4

The document provides an **overview of the local Action Plans to mainstream** the concrete **uptake of measures within territorial strategies** for environmental management of the **7 port areas**.



TREASURE

Interreg  
Euro-MED

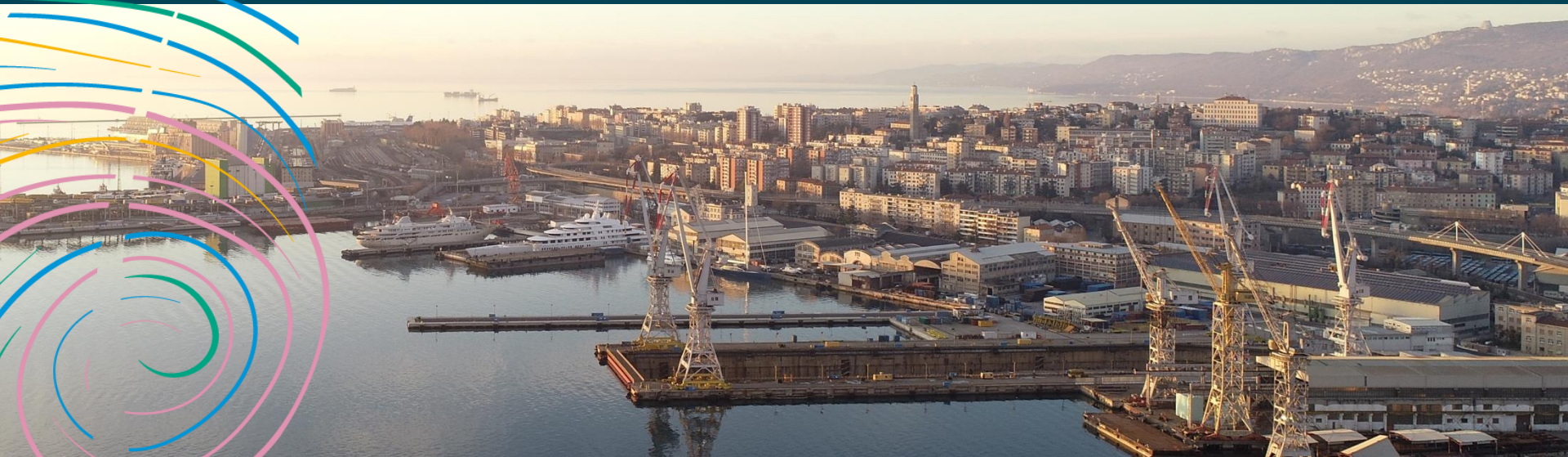


Co-funded by  
the European Union



# TREASURE

Testing novel environmental  
quality measures in and  
around Euro-MED ports



**TREASURE Webinar – Approach to Environmental Governance – 26<sup>th</sup> February 2026**



**TREASURE**

**Interreg**  
Euro-MED



Co-funded by  
the European Union



# TREASURE

**TREASURE approach to Environmental Governance –multi-stakeholder supporting ecosystems for environmental quality in Mediterranean Ports**

**The Port of Livorno**

**TREASURE Webinar – Approach to Environmental Governance – 26th February 2026**



**TREASURE**

**Interreg**  
Euro-MED



Co-funded by  
the European Union



## Highlights of the port area

The **Port of Livorno** plays a **strategic role in the centre of the Mediterranean** and is the main gateway to Tuscany and central Italy. It covers an area of more than **2.5 million** square meters, has about 90 berths, 21 km of docks, a depth of up to -13 m.



Livorno is in the Core Network of the **European TEN-T infrastructure** network (Scandinavian-Mediterranean Corridor). Infrastructural endowment allows connection with the main national road, railways and airports, as well as with the nearby **interchange facility** for intermodal transport Amerigo Vespucci.

In first 6-months 2023, Livorno handled **15,410,621 tons** of cargo and a passenger traffic of **1,194,522 transits** (+26,8%) of which **197,483 cruise passengers** (+61%)

On December 11, 2023, the Via Vas Commission **kicked off the first lot for an expansion of the Port of Livorno** designed to accommodate extra-large container ships: an infrastructure of 3 kilometres of quays, 2 large terminals and with millions of square meters of new areas and a new port entrance with depths down to -20 meters. The work will cost the state **450 million euros**



TREASURE

Interreg  
Euro-MED



Co-funded by  
the European Union





## Environmental challenges:

- 1 Environmental quality of dredged sediment:** using a multiple line of evidence approach, to be standardized and easily replicable in different port areas
- 2 Dredging and sediment management:** identifying proper management options for sediments , without interfering with port competitiveness and the environmental quality.
- 3 Re-use of dredging sediment:** the domestic Italian regulation is still very poor and, in some way, discourages the recovery of sediments for land-based uses.
- 4 Mechanical - electrochemical and biological treatment of contaminated sediments:** apply known techniques from pilot scale, to extend them to a larger(productive) scale



TREASURE

Interreg  
Euro-MED



Co-funded by  
the European Union



## Key stakeholders

Name of the organization	Role and agreements (if any)
<b>Port Authority of Northern Tyrrhenian Sea</b>	Public/ <b>Port governance and management</b> → close <b>technical-scientific collaboration</b> with ISPRA relating to environmental monitoring and the management activities of the marine sediments to be moved in the Livorno port area (and others)
<b>ARPAT – Tuscany Agency for Environmental Protection</b>	Public/ <b>Environmental regional agency</b> : environmental analysis, /monitoring → signatory of the « <b>TANIA</b> » <b>agreement</b> for a mini-lab
<b>Tuscany Regional Authority</b>	Public/ <b>Regional government</b> and administration → signatory of the « <b>TANIA</b> » <b>agreement</b> for a mini-lab
<b>Municipality of Livorno</b>	Public/ <b>Municipal government</b> and administration
<b>University of Pisa, Florence, Siena</b>	Public/ <b>Education and research</b> : experimentation of sediment treatment, environmental analyses and assessment of soil and water
<b>CIBM, Biochimie, Ambiente SpA, BSRC, ASA</b>	Public and private <b>lab analysis</b> and environmental assessment
<b>LABROMARE, TESECO</b>	Private/ <b>Environmental services</b> : sediment decontamination and treatment



# The new local agreement in Livorno

→ **New agreement signed** in order to:

- **promote collaboration** in identifying and implementing the actions necessary **for the environmentally sustainable management** of contaminated marine and coastal sediments, **including** through **environmental remediation** measures
- **set up a working group called 'mini-pilot lab'**, which may also include the participation of other research bodies



→ **Stakeholders involved:**

Organization	Role and tasks
<b>Port Authority of Northern Tyrrhenian Sea</b>	Port management authority responsible for ensuring navigability and maintaining and deepening the seabed for the areas of <b>Livorno, Piombino, Elba and Capraia</b>
<b>ARPAT</b>	Regional agency for environmental protection → skills, checking observance of the rules and legislations, environmental quality monitoring
<b>ISPRA</b>	National higher institute for environmental protection → technical expertise, facilities & equipment, standards and indicators
<b>ASEV</b>	Lead Partner of the TREASURE project → coordination and funding research



**TREASURE**

**Interreg**  
Euro-MED

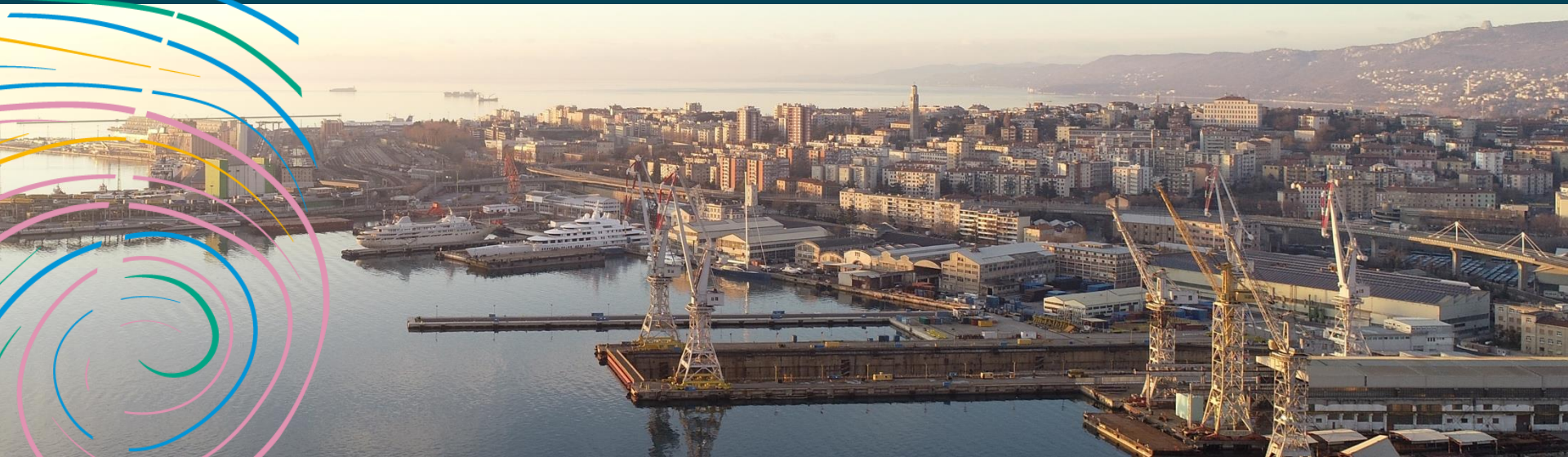


Co-funded by  
the European Union



# TREASURE

Testing novel environmental  
quality measures in and  
around Euro-MED ports



**TREASURE Webinar – Approach to Environmental Governance – 26<sup>th</sup> February 2026**



**TREASURE**

**Interreg**  
Euro-MED



Co-funded by  
the European Union